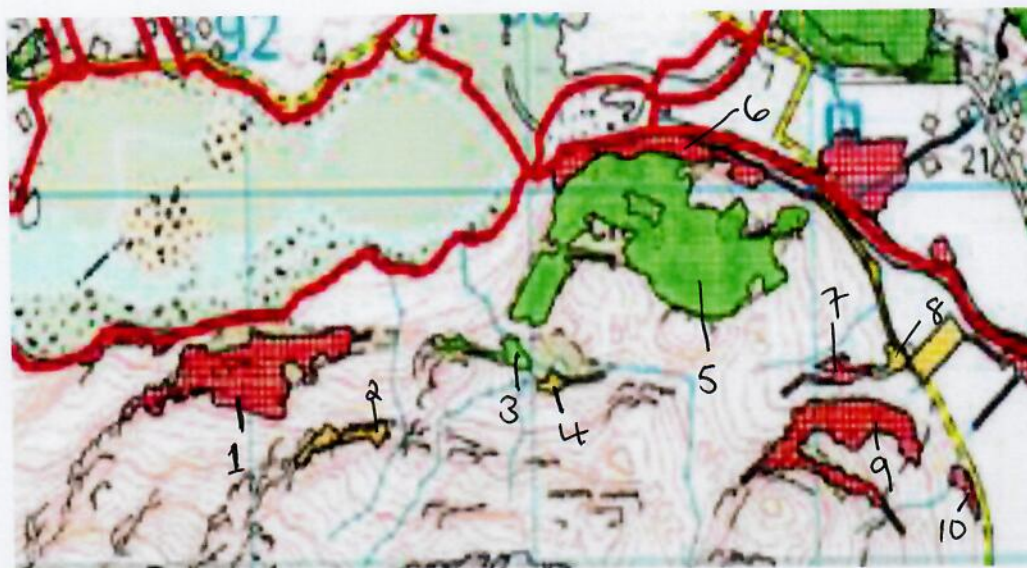
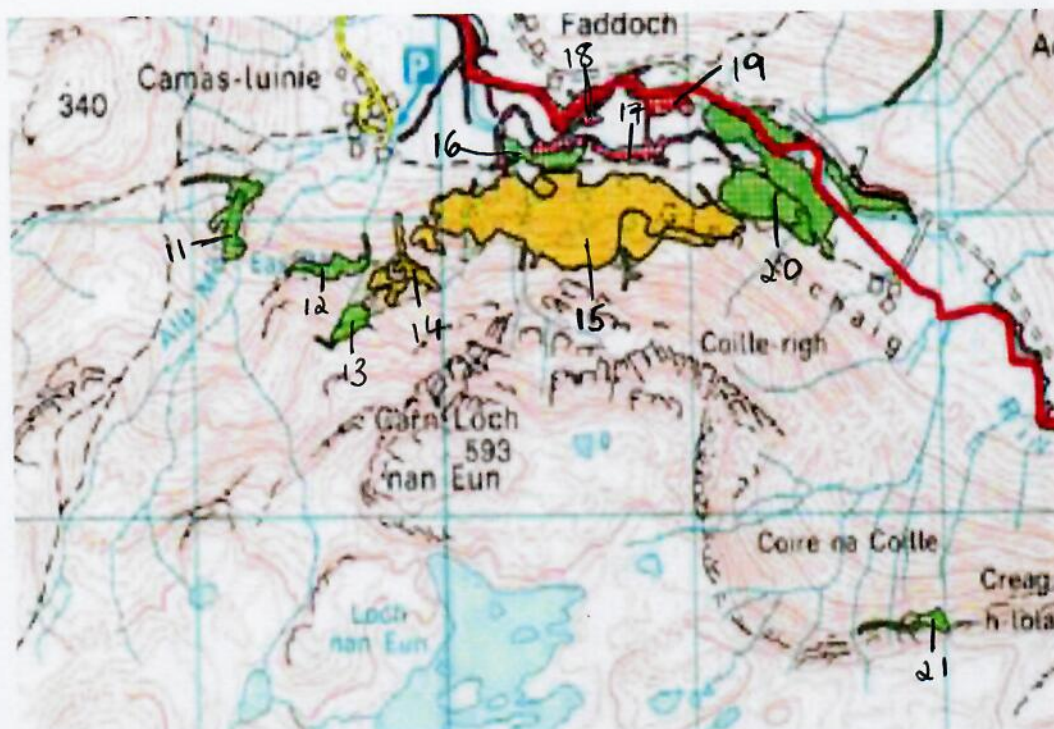


INVERINATE FOREST – HERBIVORE PRESSURE

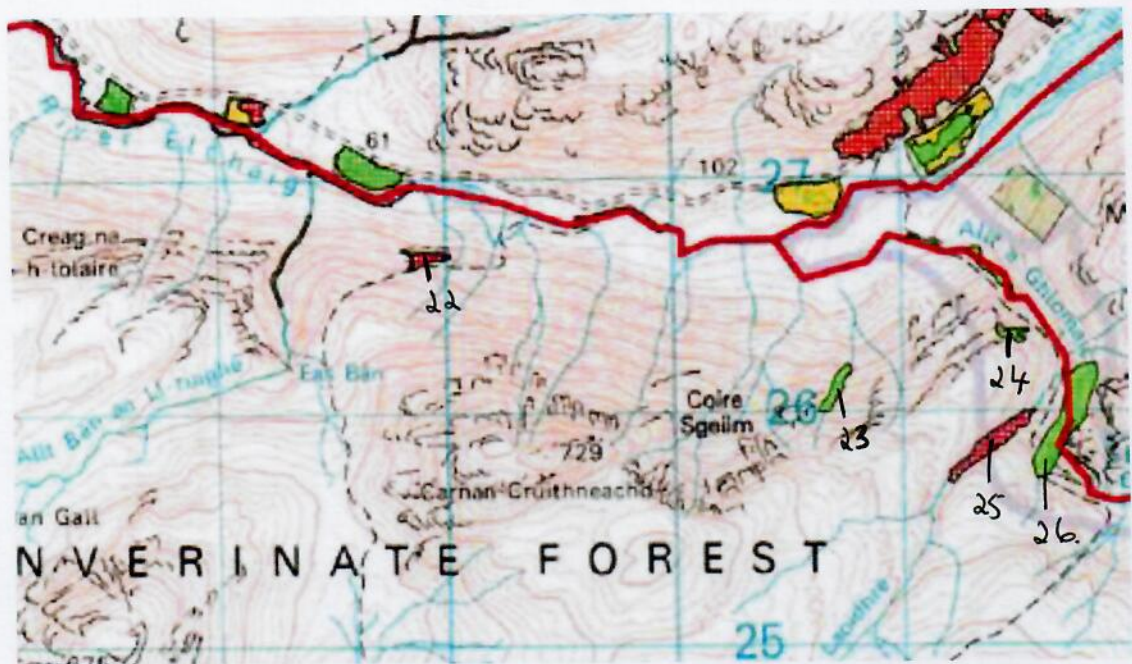


| Area Number | Reported Herbivore Pressure | Comments |
|-------------|-----------------------------|---|
| 1 | Very High | Birch woodland. No grazing pressure - Low |
| 2 | High | Birch woodland. No grazing pressure - Low |
| 3 | Low | Agreed |
| 4 | High | Birch woodland. No grazing pressure - Low |
| 5 | Low | Agreed |
| 6 | Very High | Mixed woodland. No grazing pressure - Low |
| 7 | Very High | Mixed woodland. No grazing pressure - Low |
| 8 | High | Mixed woodland. No grazing pressure - Low |
| 9 | Very High | Mixed woodland. No grazing pressure - Low |
| 10 | Very High | Mixed woodland. No grazing pressure - Low |



| | | |
|----|-----------|---|
| 11 | Medium | No grazing pressure - Low |
| 12 | Low | Agreed |
| 13 | Low | Agreed |
| 14 | High | Mixed woodland. Very light grazing by crofter's sheep - Low |
| 15 | High | Mixed woodland. Very light grazing by crofter's sheep - Low |
| 16 | Low | Agreed |
| 17 | Very High | Mixed woodland. Very light grazing by crofter's sheep - Low |
| 18 | Very High | Mixed woodland. Very light grazing by crofter's sheep - Low |
| 19 | Very High | Mixed woodland. Very light grazing by crofter's sheep - Low |
| 20 | Medium | Birch woodland. Minimal grazing pressure - Low |
| 21 | Low | Agreed |

INVERINATE FOREST – HERBIVORE PRESSURE



| | | |
|----|-----------|-------------------------|
| 22 | Very High | Birch Woodland – Medium |
| 23 | Low | Agreed |
| 24 | Low | Agreed |
| 25 | Very High | Mixed woodland - Low |
| 26 | Low | Agreed |

INVERINATE ESTATE – HERBIVORE PRESSURE



| | | |
|----|-----------|--|
| 27 | Very High | Mixed woodland. Light grazing by NTS - Low |
| 28 | Very High | Mixed woodland. Light grazing by NTS - Low |
| 29 | Medium | Mixed woodland. Light grazing by NTS - Low |
| 30 | Very High | Mixed woodland. Light grazing by NTS - Low |

INVERINATE ESTATE – HERBIVORE PRESSURE

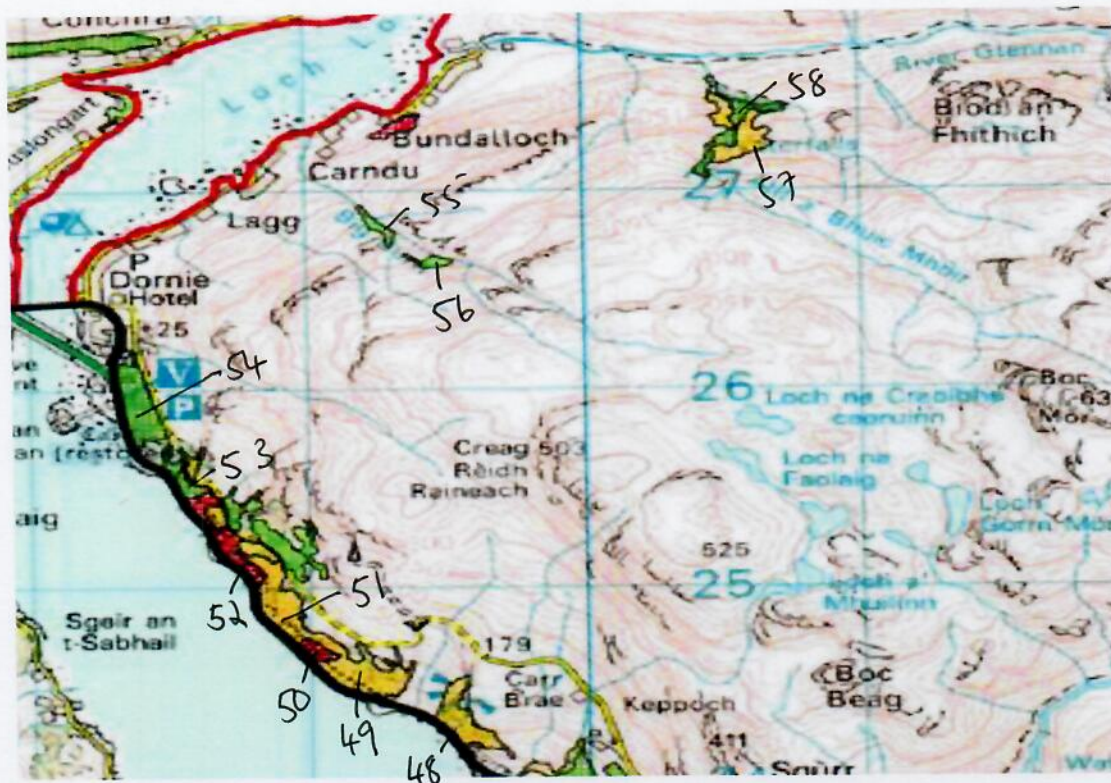


| | | |
|----|-----------|--|
| 31 | Medium | Low enclosed woodland with minimal grazing pressure. |
| 32 | Very High | Low enclosed woodland with minimal grazing pressure |
| 33 | Very High | Low enclosed woodland with minimal grazing pressure |
| 34 | Medium | Low enclosed woodland with minimal grazing pressure |
| 35 | Medium | Low enclosed woodland with minimal grazing pressure |
| 36 | Low | Low enclosed woodland with minimal grazing pressure |
| 37 | High | Low enclosed woodland with minimal grazing pressure |
| 38 | Medium | Low enclosed woodland with minimal grazing pressure |
| 39 | Very High | Low enclosed woodland with minimal grazing pressure |
| 40 | Medium | Low enclosed woodland with minimal grazing pressure |
| 41 | Medium | Low enclosed woodland with minimal grazing pressure |
| 42 | Medium | Low enclosed woodland with minimal grazing pressure |

INVERINATE ESTATE – HERBIVORE PRESSURE

| | | |
|----|--------|---|
| 43 | Medium | Mixed woodland, minimal grazing pressure & lots of bracken -Low |
| 44 | Medium | Mixed woodland, minimal grazing pressure & lots of bracken -Low |
| 45 | Medium | Mixed woodland, minimal grazing pressure & lots of bracken -Low |
| 46 | Medium | Mixed woodland, minimal grazing pressure & lots of bracken -Low |
| 47 | High | Mixed woodland, minimal grazing pressure & lots of bracken -Low |

INVERINATE FOREST – HERBIVORE FOREST



| | | |
|----|-----------|--------------------------------------|
| 48 | High | Mixed woodland. Minimal grazing -Low |
| 49 | High | Mixed woodland. Minimal grazing -Low |
| 50 | Very High | Mixed woodland. Minimal grazing -Low |
| 52 | Very High | Mixed woodland. Minimal grazing -Low |
| 53 | Medium | Mixed woodland. Minimal grazing -Low |
| 54 | Medium | Mixed woodland. Minimal grazing -Low |
| 55 | Low | Agreed |
| 56 | Low | Agreed |
| 57 | High | Birch Woodland. No grazing - Low |
| 58 | Medium | Birch Woodland. No grazing - Low |